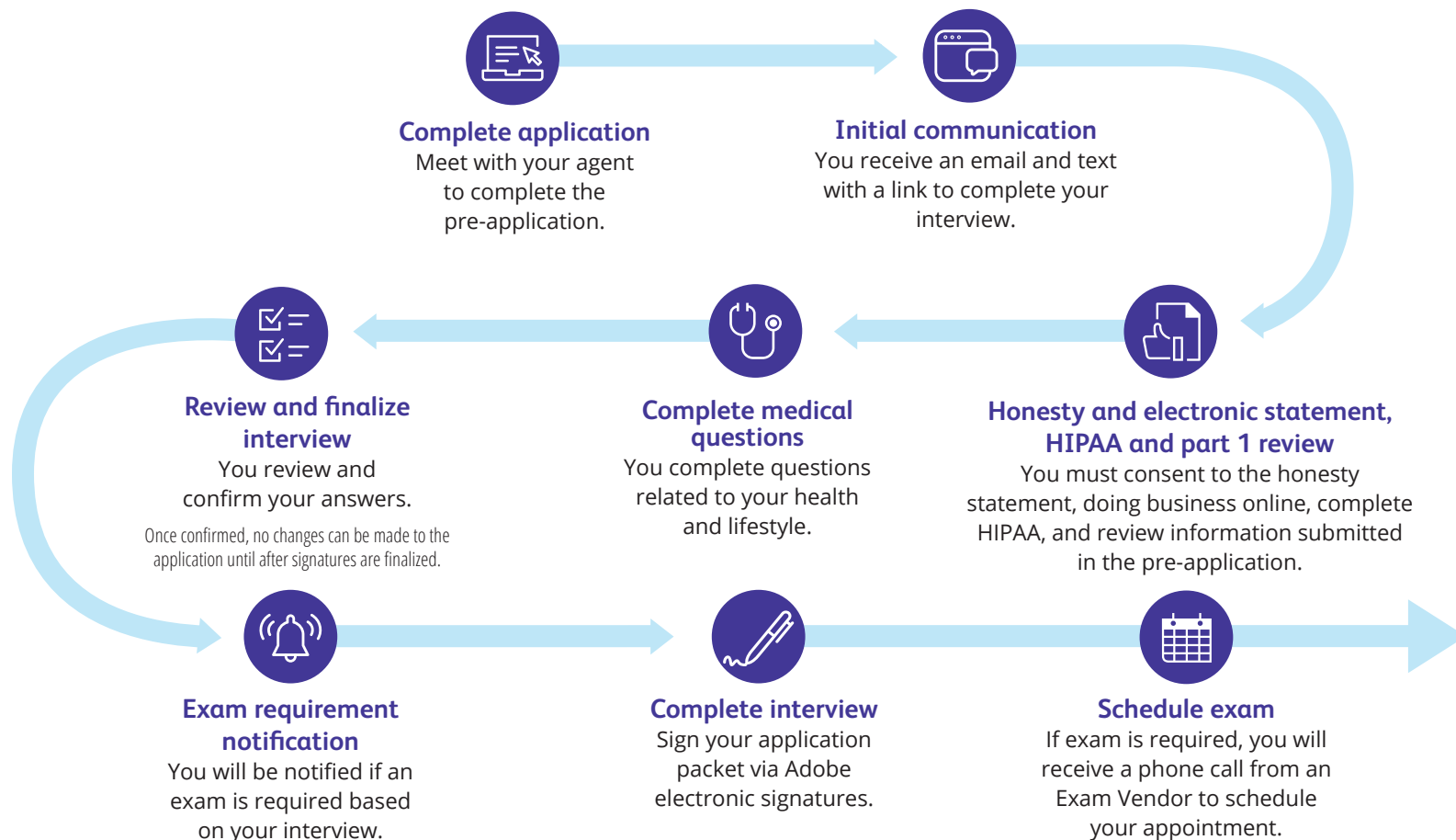


## What to expect when you apply

An important part of your life insurance application involves answering questions related to your health, medical history, and may also include the need for confidential information. Here's what the application journey looks like:





For assistance, connect with your financial professional or contact our team:  
888-800-6608, option 1 | email: [telelife@protective.com](mailto:telelife@protective.com).

Hours of operation: Monday-Friday 7 a.m. - 8 p.m. CT | Saturday 9 a.m. - 2 p.m. CT

Protective® is a registered trademark of Protective Life Insurance Company. The Protective trademarks, logos and service marks are property of Protective Life Insurance Company and are protected by copyright, trademark, and/or other proprietary rights and laws.

Protective and Protective Life refers to Protective Life Insurance Company (PLICO) located in Omaha, NE and its affiliates, including Protective Life & Annuity Insurance Company (PLAIC) located in Birmingham, AL. Insurance and annuities are issued by PLICO in all states except New York and in New York by PLAIC. Product availability and features may vary by state. Each company is solely responsible for the financial obligations accruing under the products it issues. Product guarantees are backed by the financial strength and claims-paying ability of the issuing company. Securities offered by Investment Distributors, Inc. (IDI) the principal underwriter for registered products issued by PLICO and PLAIC, its affiliates. IDI is located in Birmingham, Alabama.

PLC.4346877 (03.25)

Not FDIC/NCUA Insured	Not Bank or Credit Union Guaranteed	Not a Deposit
Not Insured By Any Federal Government Agency		May Lose Value